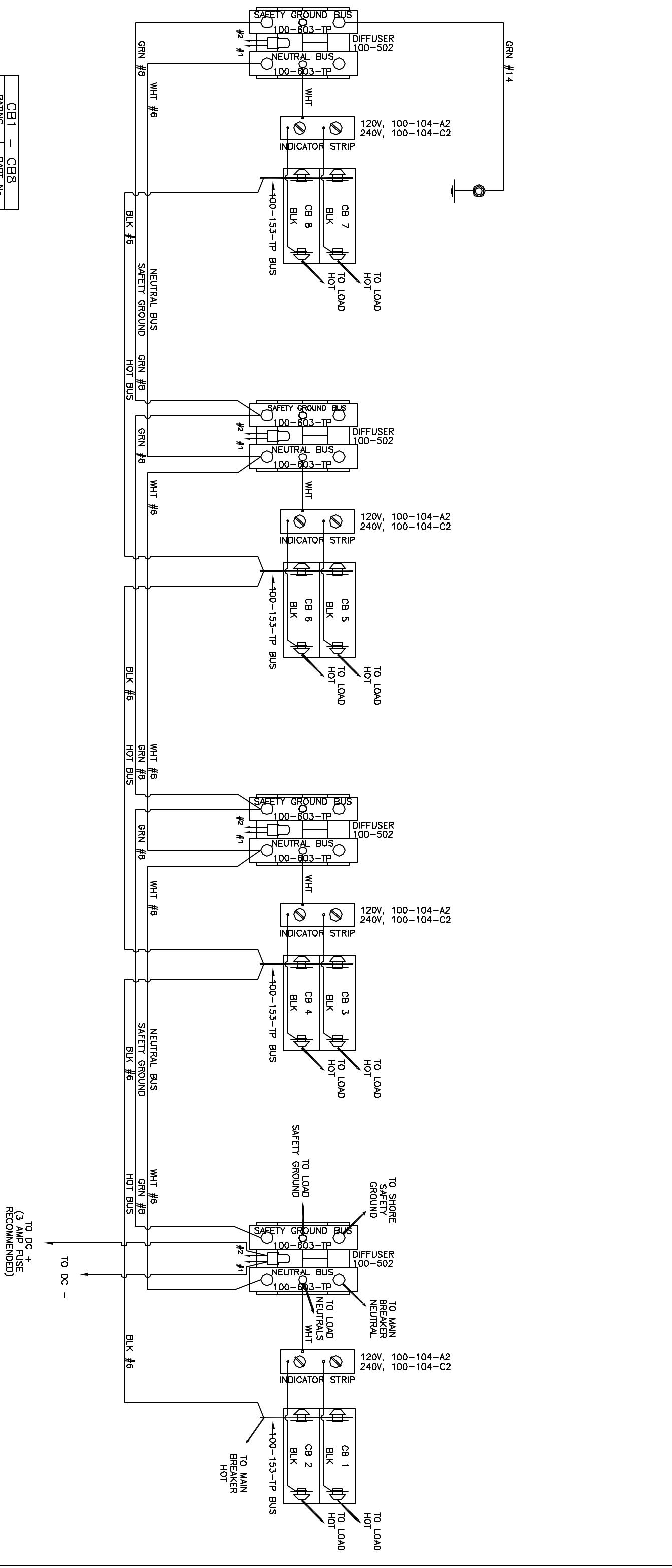


THANK YOU FOR CHOOSING PANELTRONICS, INC. THIS WIRING DIAGRAM WILL AID YOU IN THE INSTALLATION OF YOUR NEW PANEL. IT SHOULD BE KEPT FOR FUTURE REFERENCE AND SERVICE TO THE ELECTRICAL CONTROL PANEL WITH PROPER MAINTENANCE. YOU WILL ENJOY MANY YEARS OF RELIABLE OPERATION.

ALL PANELTRONICS PRODUCTS SHOULD BE USED AND INSTALLED IN ACCORDANCE WITH THE PROVISIONS OF THE NATIONAL ELECTRIC CODE, U.L. AND OTHER LOCAL, MILITARY OR INDUSTRY STANDARDS THAT ARE PERTINENT TO THE PARTICULAR END USE. IN MARINE INSTALLATIONS, ALL PANELS MUST BE INSTALLED TO MEET THE REQUIREMENTS OF U.S.C.G. 33CFR SUBPART 1, ELECTRICAL SYSTEMS, ON ALL BOATS THAT HAVE GASOLINE ENGINES FOR ELECTRICAL OR MECHANICAL POWER, OR PROPULSION, EXCEPT OUTBOARD ENGINES. AMERICAN BOAT AND YACHT COUNCIL (ABYC) STANDARDS AND RECOMMENDED PRACTICES SHOULD ALSO BE FOLLOWED.

PANELTRONICS INCORPORATED IS A COMPANY COMMITTED TO TOTAL QUALITY AND CONTINUOUS PRODUCT RESEARCH, DEVELOPMENT AND IMPROVEMENT. THEREFORE ALL INFORMATION AND SPECIFICATIONS ON THIS DIAGRAM ARE SUBJECT TO CHANGE WITHOUT NOTICE.



CB1 - CB8		
RATING	PART NO	
1A	206-0705	
1A	206-0713	
1A	206-0723	
20A	206-0735	
20A	206-0745	
30A	206-0755	
40A	206-0765	
50A	206-0775	

BACKLIGHT ASSY "A"		
RATING	PART NO	
12 VDC	100-243-11R	
24 VDC	100-243-81R	
32 VDC	100-243-91R	

CONSULT INQUIRY AT PANELTRONICS, INC. FOR THE LATEST PRODUCT INFORMATION. APPROVED BY: PANELTRONICS CORPORATION

PANELTRONICS Production, Inc. 1998 N.W. 11th Court, Hollywood, Florida 33018

REAR VIEW AC PANEL (PREMIER)

PANELTRONICS

DATE: 01/29/93

SCALE: 1X

DESIGNER: CAT

4302