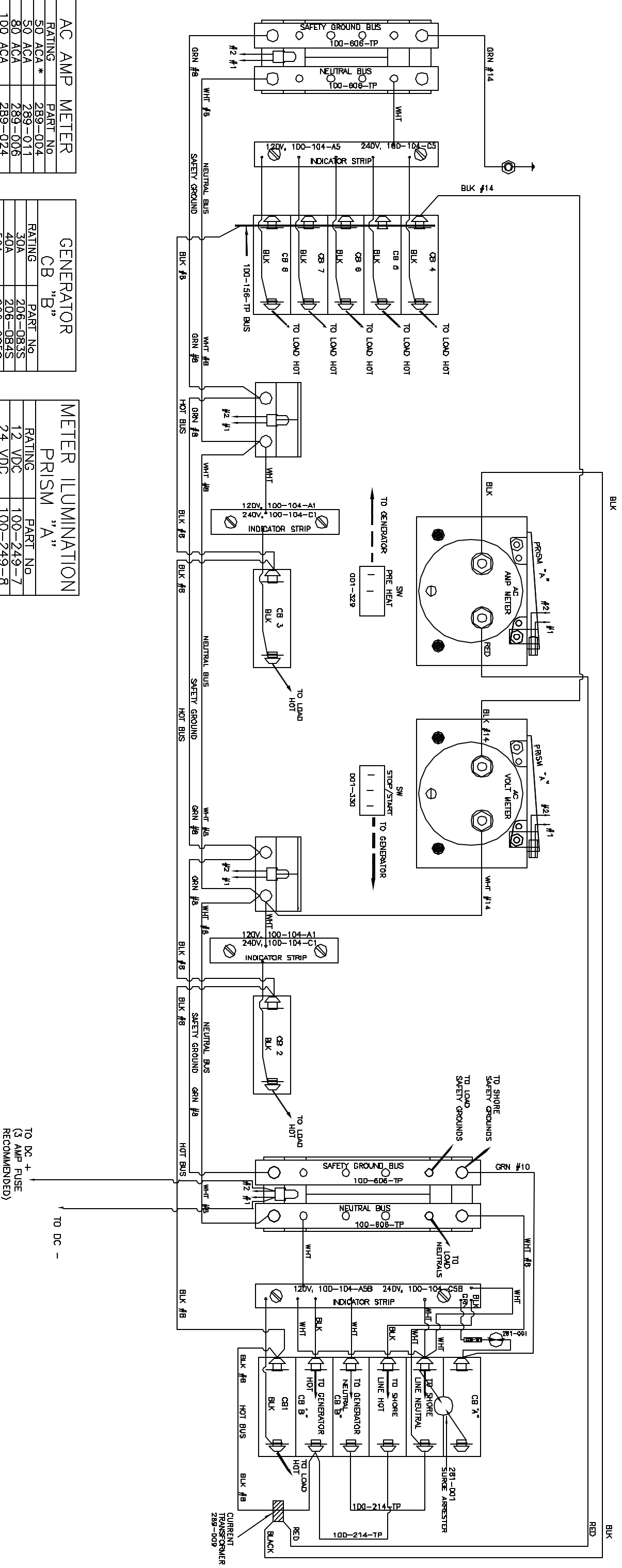


THANK YOU FOR CHOOSING PANELTRONICS. THIS WIRING DIAGRAM WILL Aid YOU IN THE INSTALLATION OF YOUR NEW PANEL. IT SHOULD BE KEPT FOR FUTURE REFERENCE AND ENJOY MANY YEARS OF RELIABLE OPERATION.

ALL PANELTRONICS PRODUCTS SHOULD BE USED AND INSTALLED IN ACCORDANCE WITH THE PROVISIONS OF THE NATIONAL ELECTRIC CODE, U.L. AND OTHER LOCAL, MILITARY OR INDUSTRY STANDARDS THAT ARE PERTINENT TO THE PARTICULAR END USE. IN MARINE INSTALLATIONS, ALL PANELS MUST BE INSTALLED TO MEET THE REQUIREMENTS OF U.S.C.G. 33CFR SUBPART 1, ELECTRICAL SYSTEMS, ON ALL BOATS THAT HAVE GASOLINE ENGINES FOR ELECTRICAL OR MECHANICAL POWER OR PROULSION, EXCEPT OUTBOARD ENGINES. AMERICAN BOAT AND YACHT COUNCIL (ABYC) STANDARDS AND RECOMMENDED PRACTICES SHOULD ALSO BE FOLLOWED.

PANELTRONICS INCORPORATED IS A COMPANY COMMITTED TO TOTAL QUALITY AND CONTINUOUS PRODUCT RESEARCH, DEVELOPMENT AND IMPROVEMENT. THEREFORE ALL INFORMATION AND SPECIFICATIONS ON THIS DIAGRAM ARE SUBJECT TO CHANGE WITHOUT NOTICE.



**AC AMP METER**

RATING	PART No
50 ACA *	289-004
50 ACA	289-011
80 ACA	289-006
100 ACA	289-024
DIGITAL	570-004
* DIRECT READ	

**GENERATOR**

RATING	PART No
30A	206-083S
40A	206-084S
50A	206-085S

**METER ILLUMINATION**

RATING	PART No
12 VDC	100-249-7
24 VDC	100-249-8
32 VDC	100-249-9

**AC VOLT METER**

RATING	PART No
0-150 VAC	289-003
0-300 VAC	289-007
DIGITAL	570-003

**CB1 - CB8**

RATING	PART No
5A	206-070S
10A	206-071S
15A	206-072S
20A	206-073S
25A	206-074S
30A	206-075S
40A	206-076S
50A	206-077S

**BACKLIGHT ASSY**

RATING	PART No
12 VDC	100-243-7(R)
24 VDC	100-243-8(R)
32 VDC	100-243-9(R)

**SHORE MAIN**

RATING	PART No
30A	206-087S
16A	206-086S

REV	DESCRIPTION	DATE
1	100-241 AND 100-242 REVISED IN PART 1/20/92	1/20/92

**PANELTRONICS** Paneltronics, Inc. 11800 W. County Highway 87, Ft. Lauderdale, FL 33318  
 REAR VIEW  
 PNL, AC EIGHT (PREMIER)  
 PANELTRONICS  
 CAT 4307