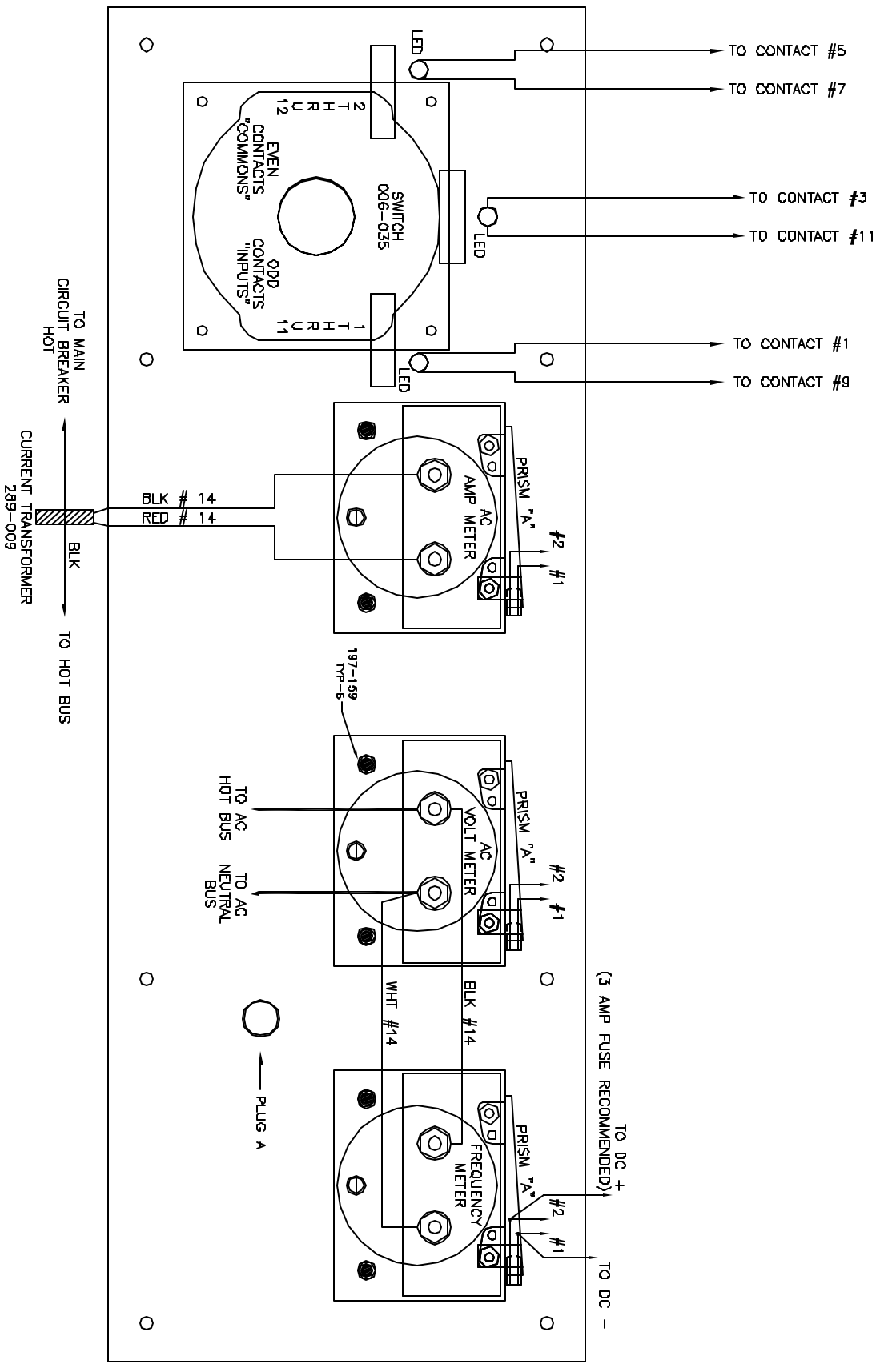
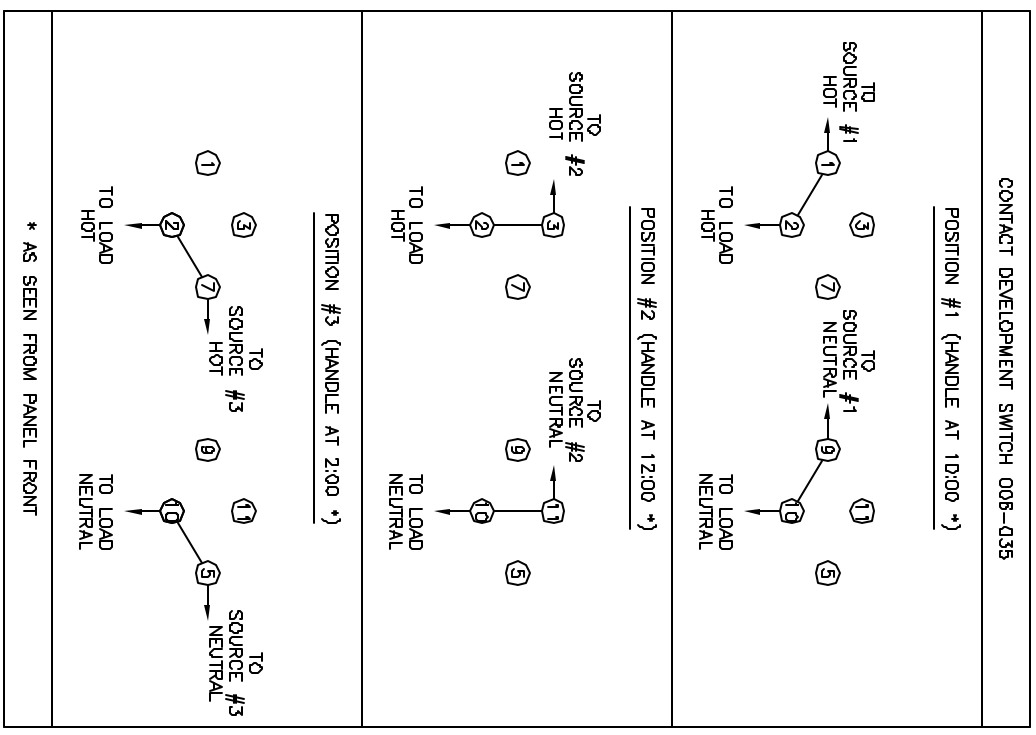


THANK YOU FOR CHOOSING PANELTRONICS, INC. THIS WIRING DIAGRAM WILL AID YOU IN THE INSTALLATION OF YOUR NEW PANEL. IT SHOULD BE KEPT FOR FUTURE REFERENCE AND SERVICE TO THE ELECTRICAL CONTROL PANEL. WITH PROPER MAINTENANCE, YOU WILL ENJOY MANY YEARS OF RELIABLE OPERATION.

ALL PANELTRONICS PRODUCTS SHOULD BE USED AND INSTALLED IN ACCORDANCE WITH THE PROVISIONS OF THE NATIONAL ELECTRIC CODE, U.L. AND OTHER LOCAL, MILITARY OR INDUSTRY STANDARDS THAT ARE PERTINENT TO THE PARTICULAR END USE. IN MARINE INSTALLATIONS, ALL PANELS MUST BE INSTALLED TO MEET THE REQUIREMENTS OF U.S.C.G. 33CFR SUBPART 1, ELECTRICAL SYSTEMS, ON ALL BOATS THAT HAVE GASOLINE ENGINES FOR ELECTRICAL OR MECHANICAL POWER OR PROPELLSION, EXCEPT OUTBOARD ENGINES. AMERICAN BOAT AND YACHT COUNCIL (ABYC) STANDARDS AND RECOMMENDED PRACTICES SHOULD ALSO BE FOLLOWED.

PANELTRONICS, INCORPORATED IS A COMPANY COMMITTED TO TOTAL QUALITY AND CONTINUOUS PRODUCT RESEARCH, DEVELOPMENT AND IMPROVEMENT. THEREFORE ALL INFORMATION AND SPECIFICATIONS ON THIS DIAGRAM ARE SUBJECT TO CHANGE WITHOUT NOTICE.



AC AMP METER	
RATING	PART NO
50 ACA*	289-004
50 ACA	289-011
100 ACA	289-006
100 ACA	289-024
DIGITAL	570-004
* DIRECT READ	

FREQUENCY METER	
RATING	PART NO
55-65 HZ	289-029
45-55 HZ	289-027
DIGITAL	570-005

AC VOLT METER	
RATING	PART NO
0-150 VAC	289-003
0-300 VAC	289-007
DIGITAL	570-003

METER ILLUMINATION	
PRISM "A"	
RATING	PART NO
12 VDC	100-249-7
24 VDC	100-249-8
32 VDC	100-249-9

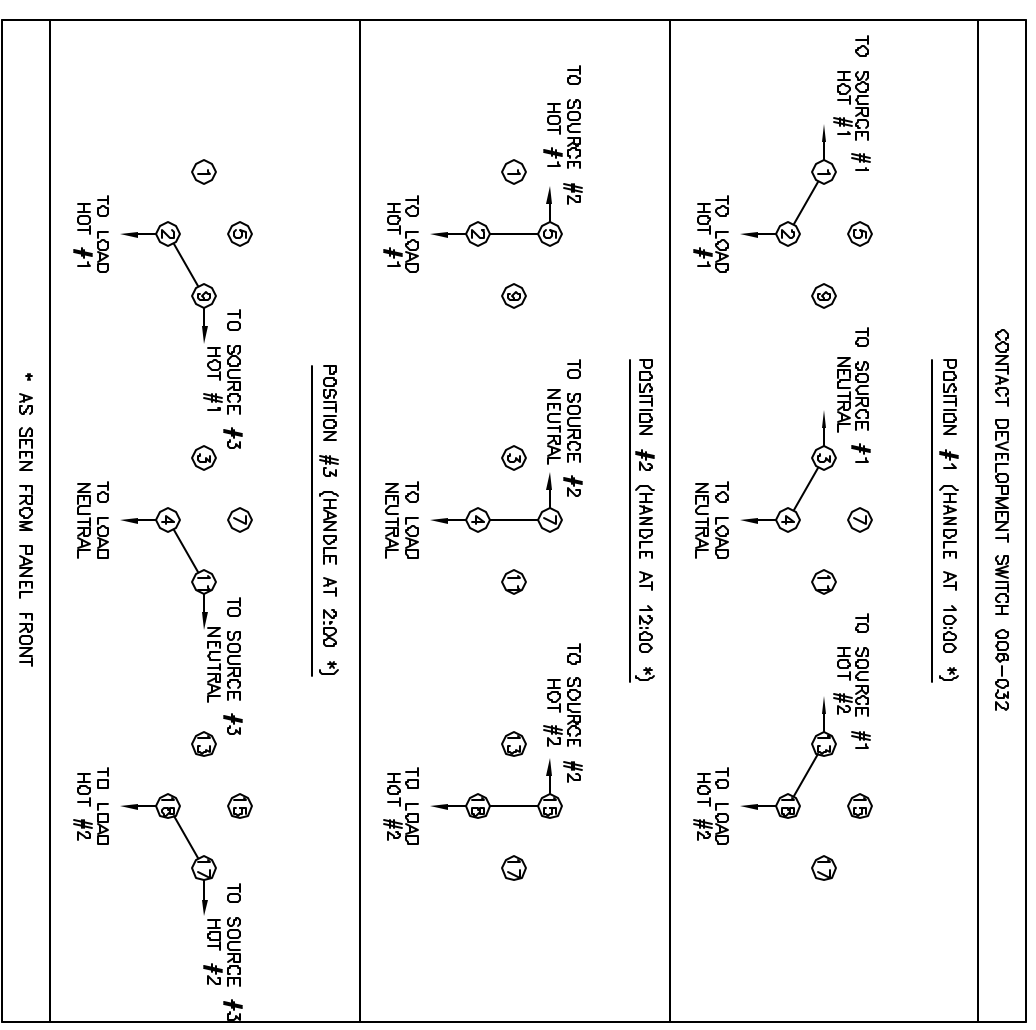
PLUG "A"	
COLOR	PART NO
BLACK	076-004
WHITE	076-020

<b>PANELTRONICS</b> <small>Paneltronics, Inc. 13800 SW 27th Avenue, Coral Gables, FL 33134</small>	
<b>PNL<sub>1</sub> AC METER PANEL (PREMIER) W/O SWITCH, AC PANEL</b>	
DATE	05/06/98
BY	1X
CHKD	D
REV	4317
QTY	0

THANK YOU FOR CHOOSING PANELTRONICS, INC. THIS WIRING DIAGRAM WILL Aid YOU IN THE INSTALLATION OF YOUR NEW PANEL. IT SHOULD BE KEPT FOR FUTURE REFERENCE AND SERVICE TO THE ELECTRICAL CONTROL PANEL. WITH PROPER MAINTENANCE, YOU WILL ENJOY MANY YEARS OF RELIABLE OPERATION.

ALL PANELTRONICS PRODUCTS SHOULD BE USED AND INSTALLED IN ACCORDANCE WITH THE PROVISIONS OF THE NATIONAL ELECTRIC CODE, U.L. AND OTHER LOCAL, MILITARY OR INDUSTRY STANDARDS THAT ARE PERTINENT TO THE PARTICULAR END USE. IN MARINE INSTALLATIONS, ALL PANELS MUST BE INSTALLED TO MEET THE REQUIREMENTS OF U.S.C.G. 33CFR SUBPART 1, ELECTRICAL SYSTEMS, ON ALL BOATS THAT HAVE GASOLINE ENGINES FOR ELECTRICAL OR MECHANICAL POWER OR PROPULSION, EXCEPT OUTBOARD ENGINES. AMERICAN BOAT AND YACHT COUNCIL (ABYC) STANDARDS AND RECOMMENDED PRACTICES SHOULD ALSO BE FOLLOWED.

PANELTRONICS, INCORPORATED IS A COMPANY COMMITTED TO TOTAL QUALITY AND CONTINUOUS PRODUCT RESEARCH, DEVELOPMENT AND IMPROVEMENT. THEREFORE ALL INFORMATION AND SPECIFICATIONS ON THIS DIAGRAM ARE SUBJECT TO CHANGE WITHOUT NOTICE.



AC AMP METER	
RATING	PART NO
50 ACA	289-011
80 ACA	289-006
100 ACA	289-024
DIGITAL	570-004

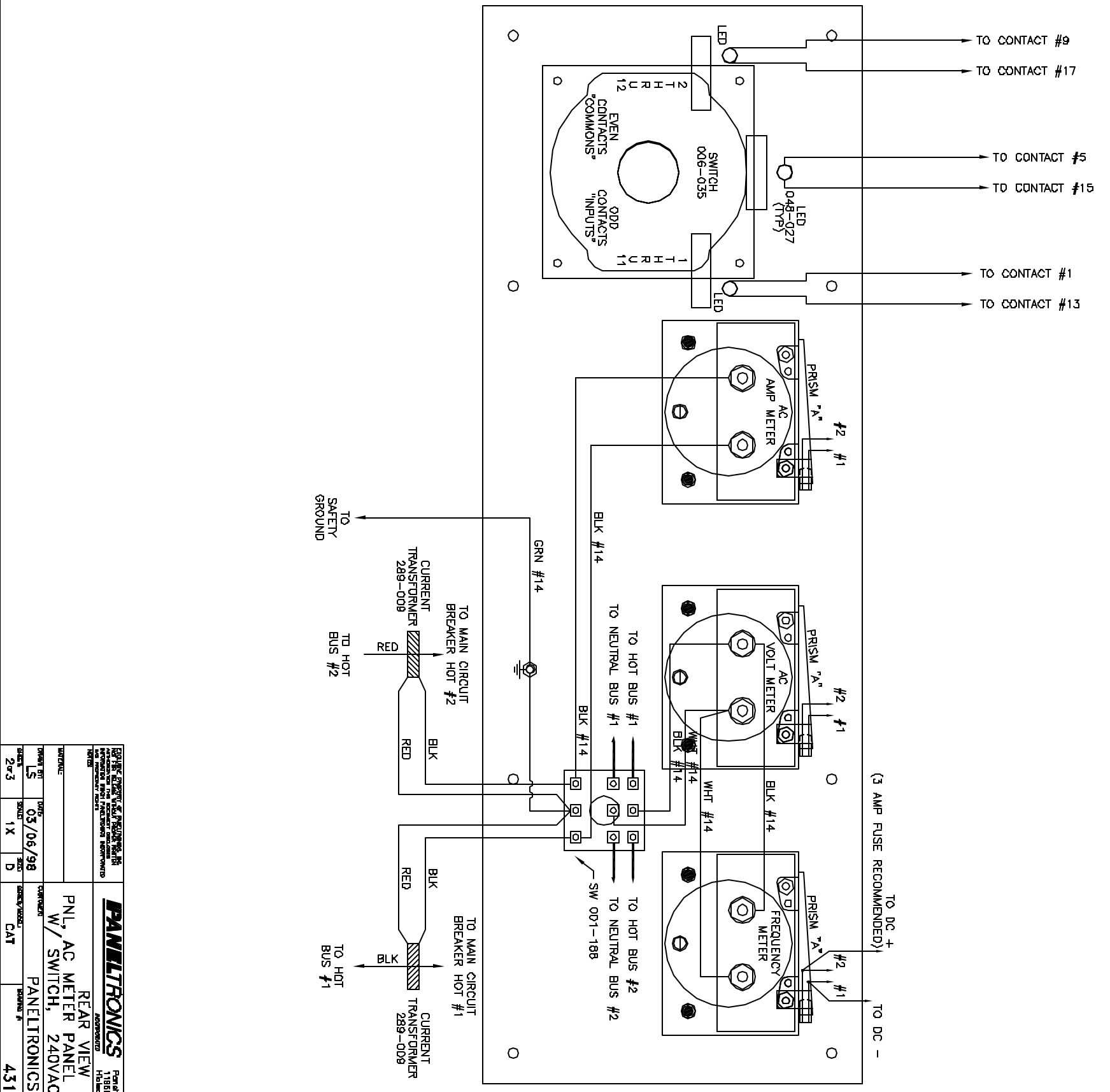
FREQUENCY METER	
RATING	PART NO
55-65 HZ	289-029
DIGITAL	570-005

AC VOLT METER	
RATING	PART NO
0-150 VAC	289-003
DIGITAL	570-003

METER ILLUMINATION	
RATING	PART NO
12 VDC	100-249-7
24 VDC	100-249-8
32 VDC	100-249-9



**PANELTRONICS** Paneltronics, Inc.  
 11800 Corporate Blvd.  
 Hollywood, Florida, FL 33018

REAR VIEW  
 PNL, AC METER PANEL (PREMIER)  
 W/ SWITCH, 240VAC PANEL  
 PANELTRONICS

DATE: 05/06/98  
 DRAWN BY: [ ]  
 CHECKED BY: [ ]  
 SCALE: 1X  
 SHEET NO: 2 of 3  
 CAT: [ ]  
 PART NO: 4317