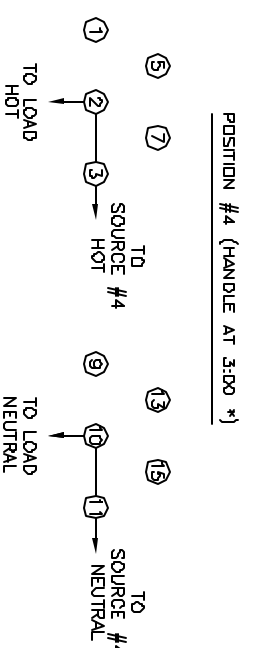
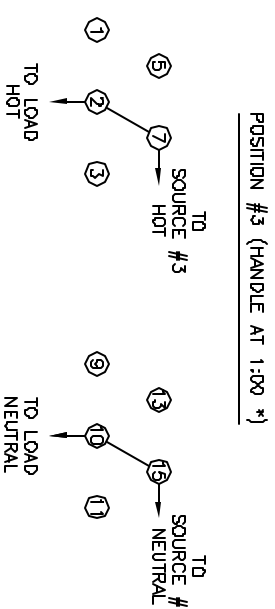
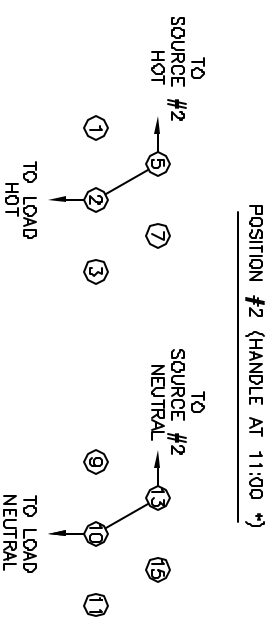
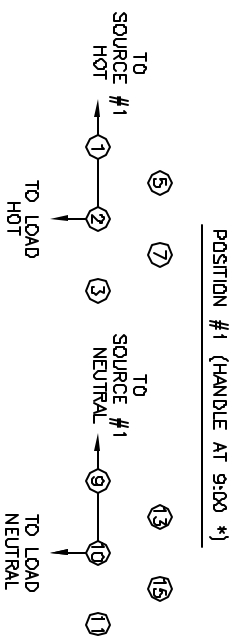


THANK YOU FOR CHOOSING PANELTRONICS, INC. THIS WIRING DIAGRAM WILL AID YOU IN THE INSTALLATION OF YOUR NEW PANEL. IT SHOULD BE KEPT FOR FUTURE REFERENCE AND SERVICE TO THE ELECTRICAL CONTROL PANEL. WITH PROPER MAINTENANCE, YOU WILL ENJOY MANY YEARS OF RELIABLE OPERATION.

ALL PANELTRONICS PRODUCTS SHOULD BE USED AND INSTALLED IN ACCORDANCE WITH THE PROVISIONS OF THE NATIONAL ELECTRIC CODE, U.L. AND OTHER LOCAL, MILITARY OR INDUSTRY STANDARDS THAT ARE PERTINENT TO THE PARTICULAR END USE. IN MARINE INSTALLATIONS, ALL PANELS MUST BE INSTALLED TO MEET THE REQUIREMENTS OF U.S.C.G. 33CFR SUBPART 1, ELECTRICAL SYSTEMS, ON ALL BOATS THAT HAVE GASOLINE ENGINES FOR ELECTRICAL OR MECHANICAL POWER OR PROPULSION, EXCEPT OUTBOARD ENGINES. AMERICAN BOAT AND YACHT COUNCIL (ABYC) STANDARDS AND RECOMMENDED PRACTICES SHOULD ALSO BE FOLLOWED.

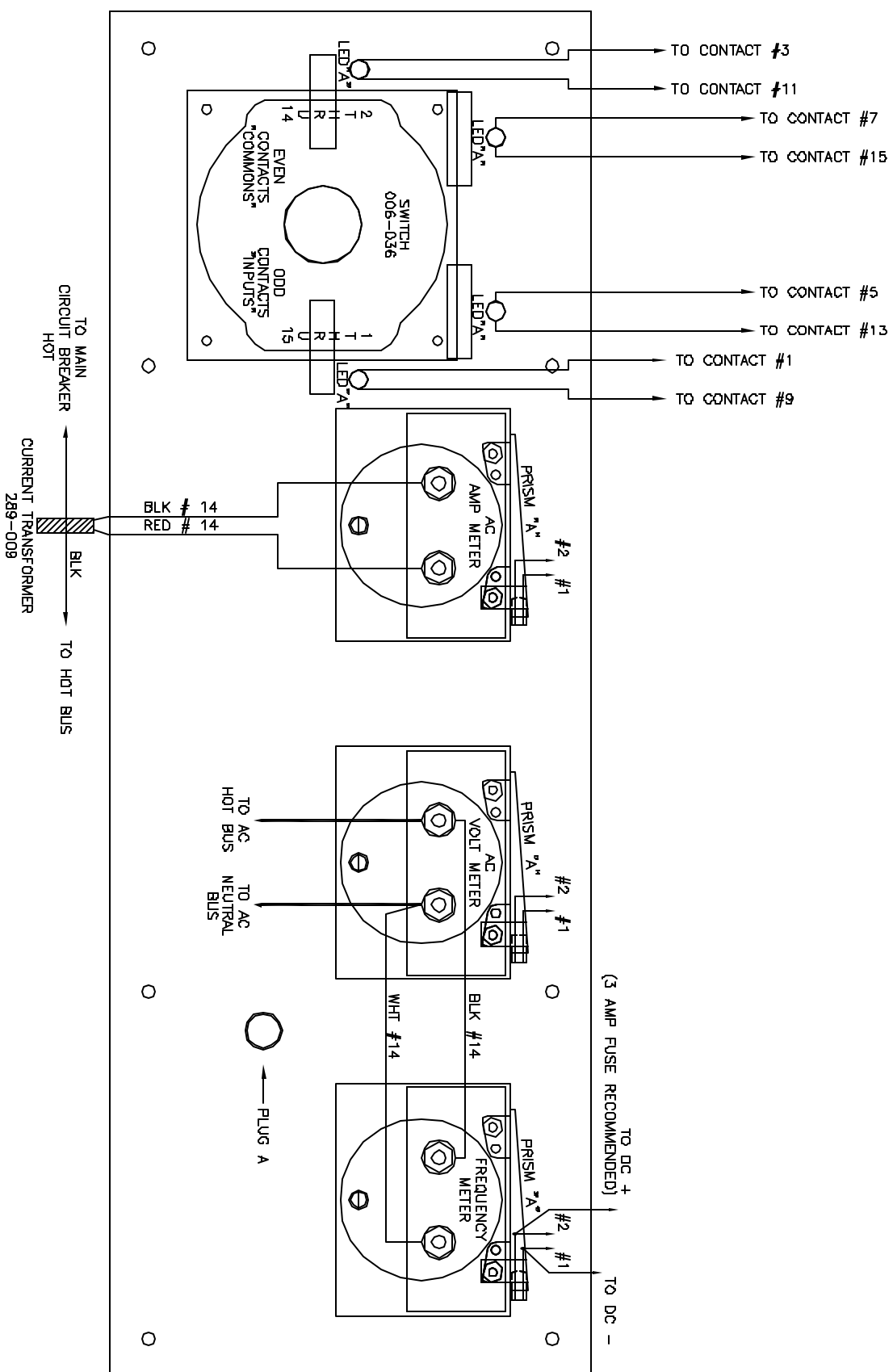
PANELTRONICS INCORPORATED IS A COMPANY COMMITTED TO TOTAL QUALITY AND CONTINUOUS PRODUCT RESEARCH, DEVELOPMENT AND IMPROVEMENT, THEREFORE ALL INFORMATION AND SPECIFICATIONS ON THIS DIAGRAM ARE SUBJECT TO CHANGE WITHOUT NOTICE.

CONTACT DEVELOPMENT SWITCH 006-036



\* AS SEEN FROM PANEL FRONT

AC AMP METER		FREQUENCY METER		METER ILLUMINATION	
RATING	PART NO	RATING	PART NO	RATING	PART NO
50 A/A	289-004	55-65 HZ	289-029	120V	048-01B
80 A/A	289-011	45-55 HZ	289-027	240V	048-01B
100 A/A	289-024	DIGITAL	570-005		
		DIGITAL	570-004		
AC VOLT METER		PLUG *A*			
RATING	PART NO	RATING	PART NO		
D-150 VAC	289-003	12 VDC	100-249-7	COLOR	PART NO
D-300 VAC	289-007	24 VDC	100-249-8	BLACK	018-004
DIGITAL	570-003	47 VDC	100-249-9	WHITE	018-020



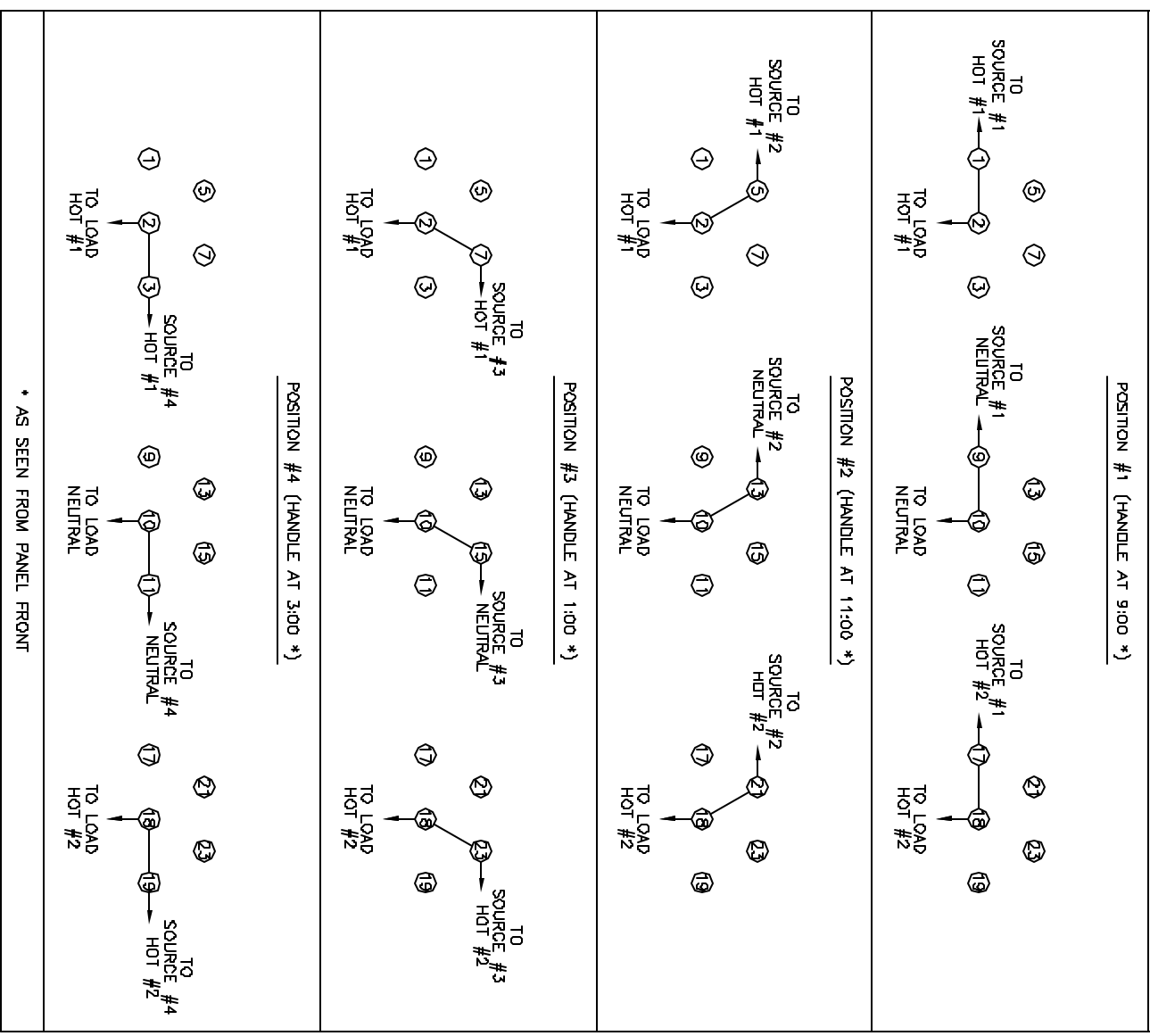
<b>PANELTRONICS</b> PREMIER DIVISION 11800 Corporate Blvd. Jacksonville, FL 32218 (904) 371-1111		<b>REAR VIEW</b> PNL <sub>2</sub> AC METER PANEL (PREMIER) W/O SWITCH, AC PANEL PANELTRONICS	
DATE	05/12/98	DESIGNER	CAT
REV	2 of 3	SCALE	1X
PART NO: 4318		REV: 0	

THANK YOU FOR CHOOSING PANELTRONICS, INC. THIS WIRING DIAGRAM WILL AID YOU IN THE INSTALLATION OF YOUR NEW PANEL. IT SHOULD BE KEPT FOR FUTURE REFERENCE AND SERVICE TO THE ELECTRICAL CONTROL PANEL. WITH PROPER MAINTENANCE, YOU WILL ENJOY MANY YEARS OF RELIABLE OPERATION.

ALL PANELTRONICS PRODUCTS SHOULD BE USED AND INSTALLED IN ACCORDANCE WITH THE PROVISIONS OF THE NATIONAL ELECTRIC CODE, U.L. AND OTHER LOCAL, MILITARY OR INDUSTRY STANDARDS THAT ARE PERTINENT TO THE PARTICULAR END USE. IN MARINE INSTALLATIONS, ALL PANELS MUST BE INSTALLED TO MEET THE REQUIREMENTS OF U.S.C.G. 33CFR SUBPART 1, ELECTRICAL SYSTEMS, ON ALL BOATS THAT HAVE GASOLINE ENGINES FOR ELECTRICAL OR MECHANICAL POWER OR PROPULSION, EXCEPT OUTBOARD ENGINES. AMERICAN BOAT AND YACHT COUNCIL (ABYC) STANDARDS AND RECOMMENDED PRACTICES SHOULD ALSO BE FOLLOWED.

PANELTRONICS, INCORPORATED IS A COMPANY COMMITTED TO TOTAL QUALITY AND CONTINUOUS PRODUCT RESEARCH, DEVELOPMENT AND IMPROVEMENT. THEREFORE ALL INFORMATION AND SPECIFICATIONS ON THIS DIAGRAM ARE SUBJECT TO CHANGE WITHOUT NOTICE.

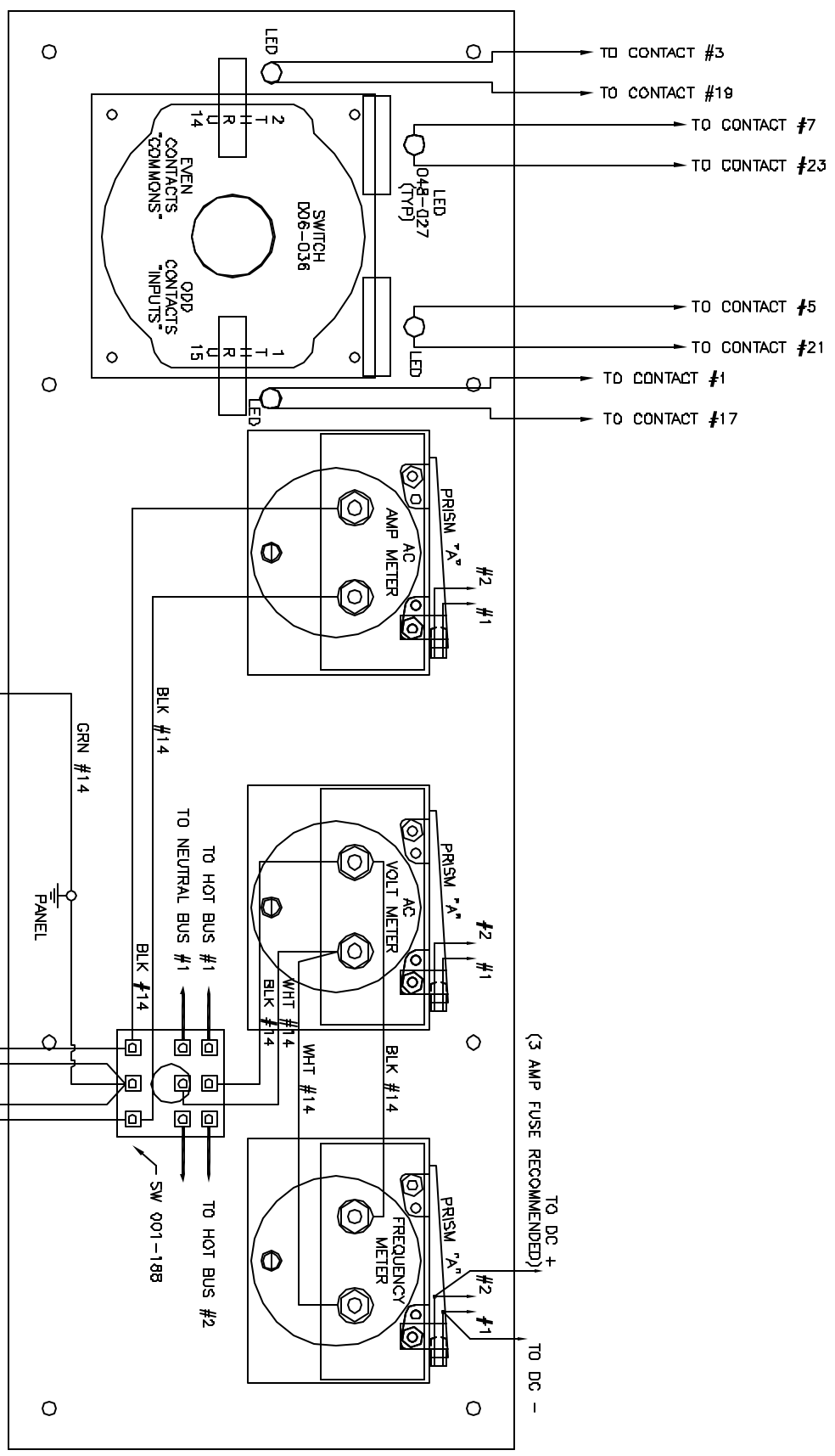
CONTACT DEVELOPMENT SWITCH 008-037



AC AMP METER	
RATING	PART NO.
50 AKA	289-011
50 AKA	289-009
100 AKA	249-024
DIGITAL	570-004

FREQUENCY METER	
RATING	PART NO.
55-65 HZ	289-029
DIGITAL	570-005

METER ILLUMINATION	
PRISM	A
RATING	PART NO.
12 VDC	100-249-7
24 VDC	100-249-8
32 VDC	100-249-9



**PANELTRONICS** Paneltronics, Inc. 11800 Corporate Blvd. Hollywood, FL 33018

REAR VIEW  
 PNL, AC METER PANEL (PREMIER)  
 W/ SWITCH, 240VAC PANEL

DATE: 05/12/98  
 DRAWN BY: [Signature]  
 CHECKED BY: [Signature]  
 SCALE: 1X

CAT: 4318